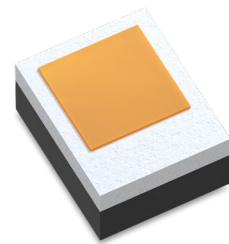
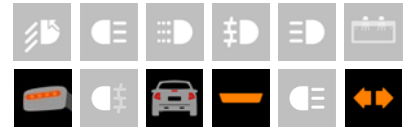


LUXEON FX2-L PC Amber (Gen9)

Industry leading solutions for exterior automotive lighting

LUXEON FX2-L PC Amber provides industry-leading solutions for your front and rear turn applications. The Lumileds automotive binning structure meets both, SAE and ECE color specifications, and is hot binned at 85°C, consistent with current automotive operating environments. All LUXEON FX2-L PC Amber LEDs are AEC-Q102 qualified and USCAR-33 tested.



FEATURES AND BENEFITS

- High drive current capability for increased flux performance
- Compact, robust 2-pad design enables reliable interconnect to AI-IMS boards
- Advanced CSP technology provides cost-effective leading performance
- Hot binned at 85°C MP to match operating conditions

PRIMARY APPLICATIONS

- Sidemarkers
- Turn indicators
 - Front
 - Rear

Table of Contents

General Product Information	2
Product Test and Binning Conditions	2
Part Number Nomenclature	2
Environmental Compliance.....	3
Performance Characteristics	4
Product Selection Guide	4
Optical Characteristics	4
Electrical Characteristics.....	4
Thermal Characteristics	4
Absolute Ratings.....	5
Characteristic Curves	6
Spectral Power Distribution Characteristics	6
Light Output Characteristics	6
Forward Current and Forward Voltage Characteristics	7
Color Shift Characteristics.....	8
Radiation Pattern Characteristics	10
Operating Limits Characteristics.....	10
Permissible Pulse Handling Characteristics	11
Product Bin and Labeling Definitions	12
Decoding Product Bin Labeling.....	12
Luminous Flux Bins	12
Color Codes.....	13
Color Bin Definitions	14
Forward Voltage Bins.....	15
Mechanical Dimensions.....	16
Package Weight	16
JEDEC Moisture Sensitivity	16
Packaging Information	17
Pocket Tape Dimensions.....	17
Reel Dimensions	17
Product Labelling	18
About Lumileds	19

General Product Information

LUXEON FX2-L PC Amber emitters are high-power Lumiramic™ Phosphor converted InGaN emitters mounted on an AlN package. All LUXEON FX2-L PC Amber emitters contain a TVS chip for ESD protection.

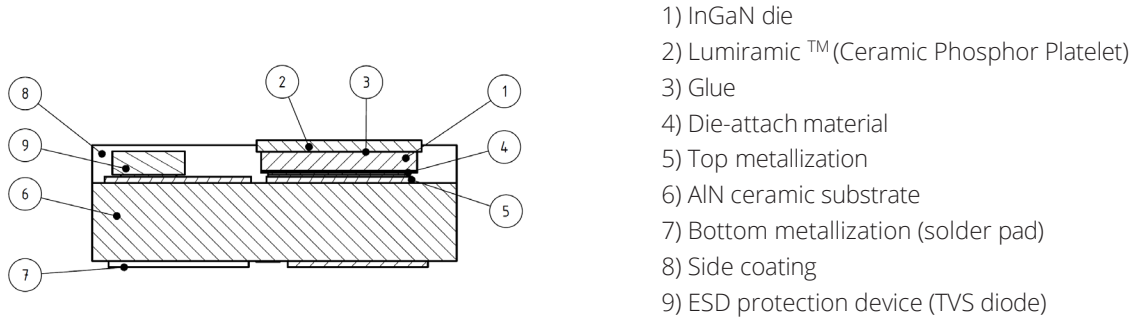


Figure 1. Schematic cross section LUXEON FX2-L PC Amber

Product Test and Binning Conditions

Monopulse (MP) testing for LUXEON FX2-L PC Amber is done with a pulse of 7 ms. The binning condition for LUXEON FX2-L PC Amber is MP testing at 1000 mA at a temperature of 85 °C.

Part Number Nomenclature

Part numbers for LUXEON FX2-L PC Amber follow the convention below:

A 1 F 2 – **B B B B** C D E **F G G G G** H

Where:

- B B B B** – designates color temperature or wavelength (0591 = Amber)
- C** – designates Lumiramic™ size (F = 1150 μm)
- D** – designates form factor (2 = 2PAD)
- E** – designates product generation (D = Gen9)
- F** – designates future product offering (default = 0)
- G G G G** – designates minimum luminous flux (example: 0300 = 300 lumens)
- H** – designates options code for distribution (default = 0)

Therefore, the following part number is used for a LUXEON FX2-L PC Amber with a minimum luminous flux of 300 lumens:

A 1 F 2 – **0 5 9 1** F 2 D **0 0 3 0 0 0**

Environmental Compliance

Lumileds Holding B.V. is committed to providing environmentally friendly products to the solid-state lighting market. LUXEON FX2-L PC Amber is compliant to the European Union directives on the restriction of hazardous substances in electronic equipment, namely the RoHS Directive 2011/65/EU and REACH Regulation (EC) 1907/2006. Lumileds Holding B.V. will not intentionally add the following restricted materials to its products: lead, mercury, cadmium, hexavalent chromium, polybrominated biphenyls (PBB) or polybrominated diphenyl ethers (PBDE).

Performance Characteristics

Product Selection Guide

Table 1. Product performance and optical characteristics of LUXEON FX2-L PC Amber at MP binning condition

MINIMUM LUMINOUS FLUX ^[1] (lm)	PART NUMBER
280	A1F2-0591F2D002800
290	A1F2-0591F2D002900
300	A1F2-0591F2D003000
310	A1F2-0591F2D003100

Notes for Table 1:

- Lumileds maintains a tolerance of $\pm 6.5\%$ on luminous flux measurements.

Optical Characteristics

Table 2. Optical characteristics for LUXEON FX2-L PC Amber at MP binning condition and far-field optical characteristics

PART NUMBER	Dominant Wavelength (nm) ^[1]		TYPICAL TOTAL INCLUDED ANGLE ^[2] $2\theta_{0.90V}$	TYPICAL VIEWING ANGLE ^[3] $2\theta_{1/2}$
	MINIMUM	MAXIMUM		
A1F2-0591F2Dxxxxxx	587.6	590.9	140°	120°

Notes for Table 2:

- Dominant wavelength is measured at binning condition.
- $2\theta_{0.90V}$ denotes the total angle at which 90% of total luminous flux is captured, i.e., the cone defined by the off-axis angle $\theta_{0.90V}$ from the LED centerline includes 90% of the total flux.
- $2\theta_{1/2}$ denotes the viewing angle, with $\theta_{1/2}$ being the off-axis angle from the LED centerline where the luminous intensity is $\frac{1}{2}$ of the peak value.

Electrical Characteristics

Table 3. Electrical characteristics for LUXEON FX2-L PC Amber at MP binning condition

PART NUMBER	FORWARD VOLTAGE (V) ^[1] [V]		
	MIN.	TYP.	MAX.
A1F2-0591F2Dxxxxxx	2.90	3.10	3.35

Notes for Table 3:

- Lumileds maintains a tolerance of $\pm 0.06V$ on forward voltage measurements.

Thermal Characteristics

Table 4. Thermal characteristics for LUXEON FX2-L PC Amber at binning current and 25°C stage temperature

PART NUMBER	THERMAL RESISTANCE— JUNCTION TO CASE (K/W)			
	$R\theta_{j-c} \text{ el}^{[2]}$		$R\theta_{j-c} \text{ real}^{[3]}$	
	TYPICAL	MAXIMUM	TYPICAL	MAXIMUM
A1F2-0591F2Dxxxxxx	4.1	4.5	5.6	6.1

Notes for Table 4:

- Lumileds maintains a tolerance of $\pm 0.06V$ on forward voltage measurements.
- Ratio between temperature difference (junction to case) and electrical input power (references JESD51-51, JESD51-14)
- Ratio between temperature difference (junction to case) and dissipated heat, i.e., emitted light taken into account (references JESD51-51, JESD51-14)
- Ratio between temperature difference (junction to case) and dissipated heat, i.e., emitted light taken into account (references JESD51-51, JESD51-14)

Absolute Ratings

Table 5. Absolute ratings for LUXEON FX2-L PC Amber

PARAMETER	PERFORMANCE
Minimum DC Forward Current	50 mA
Maximum DC Forward Current ^[1]	1250 mA
Maximum Peak Pulsed Forward Current ^[1]	2000 mA
Maximum Emitter Junction Temperature ^[1] (DC & Pulse)	150 °C
Maximum Emitter Junction Temperature ^[1,2] (DC & Pulse), short term	180 °C
ESD Sensitivity ^[3]	HBM ±8 kV CDM ±2 kV
Operating Case Temperature ^[1]	-40 °C to 135 °C
Emitter Storage Temperature	-40 °C to 135 °C
SMD Process Classification Temperature	260 °C
Allowable Reflow Cycles	3
Reverse Voltage ($V_{reverse}$)	Not designed to be driven in reverse bias

Notes for Table 5:

1. Proper current derating must be observed to maintain the junction temperature below the maximum allowable junction temperature.
2. Short time operations of less than 200 hours
3. Measured using human body model (per ANSI/ANSI/ESDA/JEDEC JS-001-2017), charged device model (AEC Q101-005 rev A).

Characteristic Curves

Spectral Power Distribution Characteristics

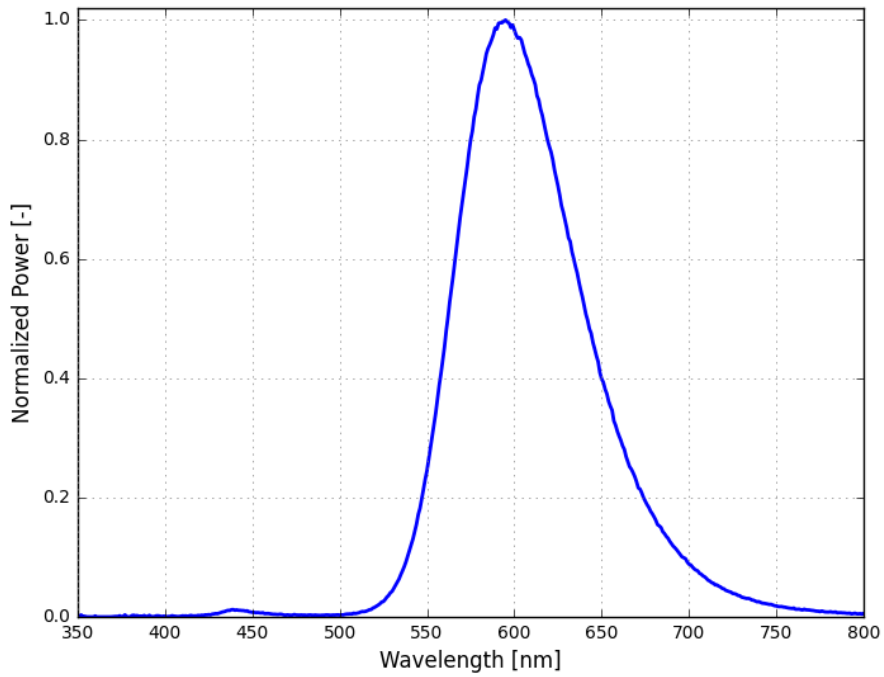


Figure 2. Typical normalized power vs. wavelength for LUXEON FX2-L PC Amber at MP binning condition

Light Output Characteristics

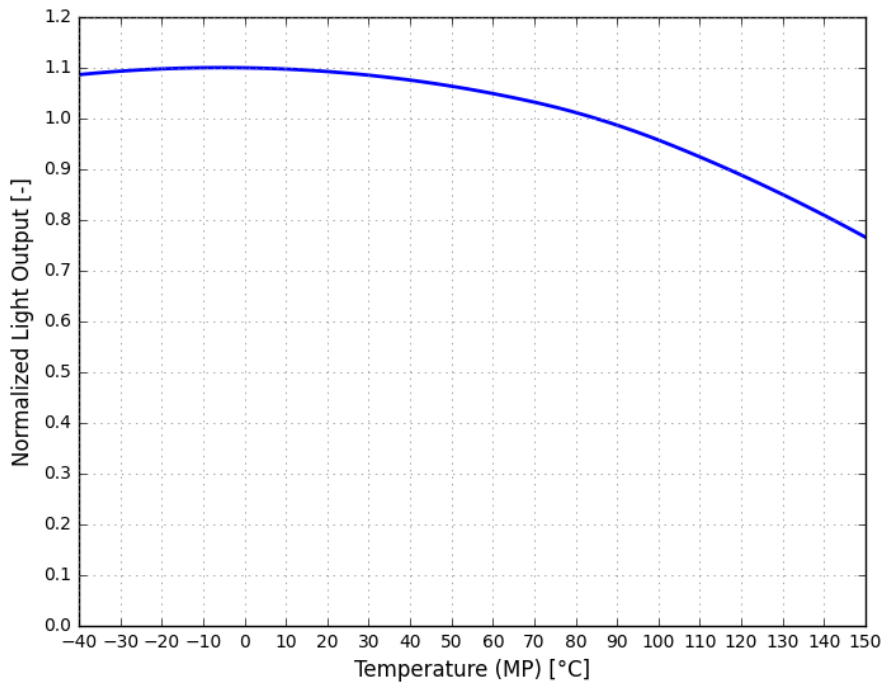


Figure 3. Typical normalized light output vs. temperature for LUXEON FX2-L PC Amber at MP binning current

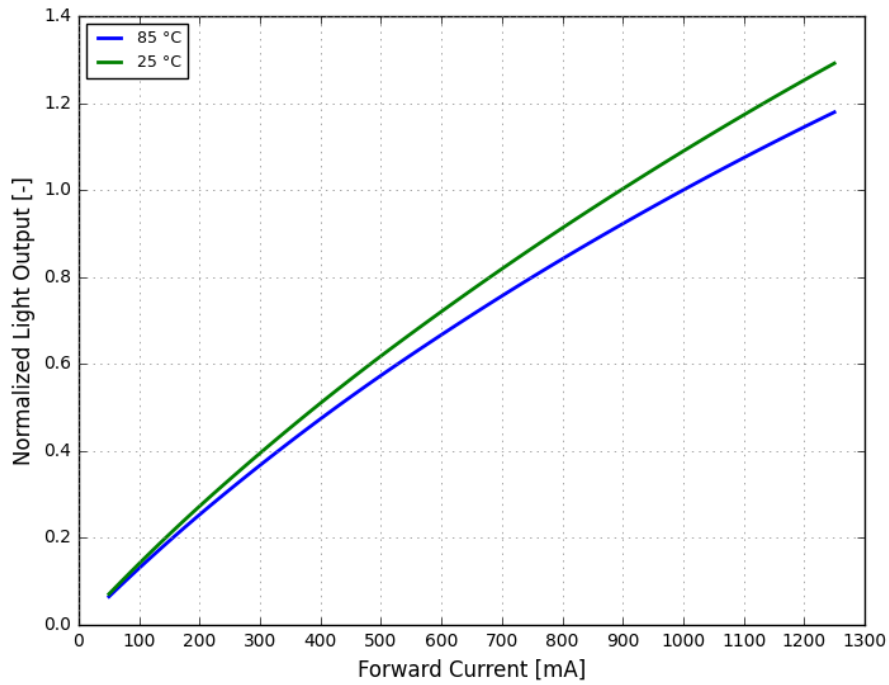


Figure 4. Typical normalized light output vs. forward current for LUXEON FX2-L PC Amber at MP binning temperature and at room temperature

Forward Current and Forward Voltage Characteristics

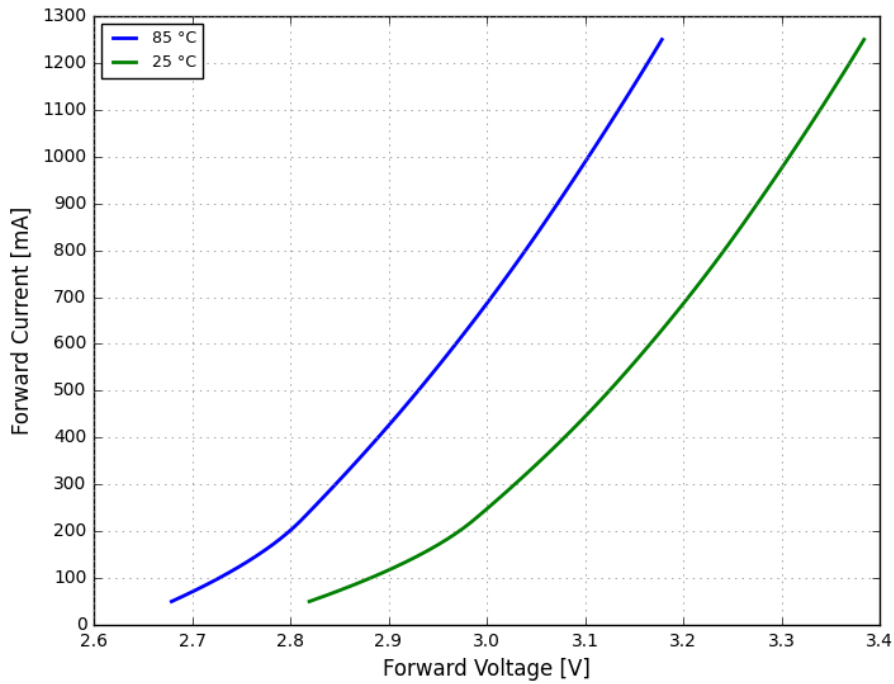


Figure 5. Typical forward current vs. forward voltage for LUXEON FX2-L PC Amber at MP binning temperature and at room temperature

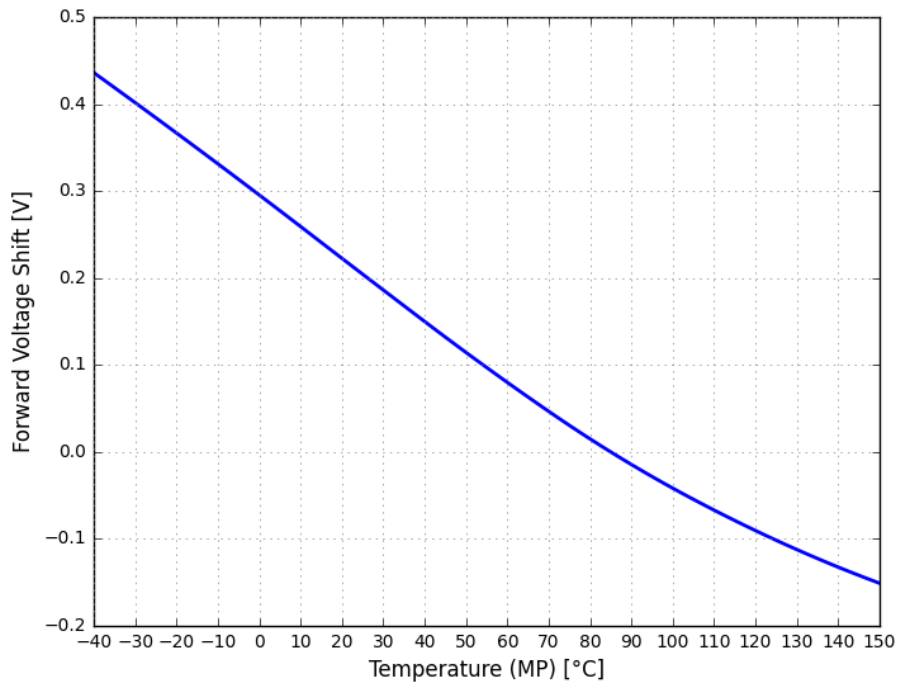


Figure 6. Typical forward voltage shift vs. temperature for LUXEON FX2-L PC Amber at MP binning current

Color Shift Characteristics

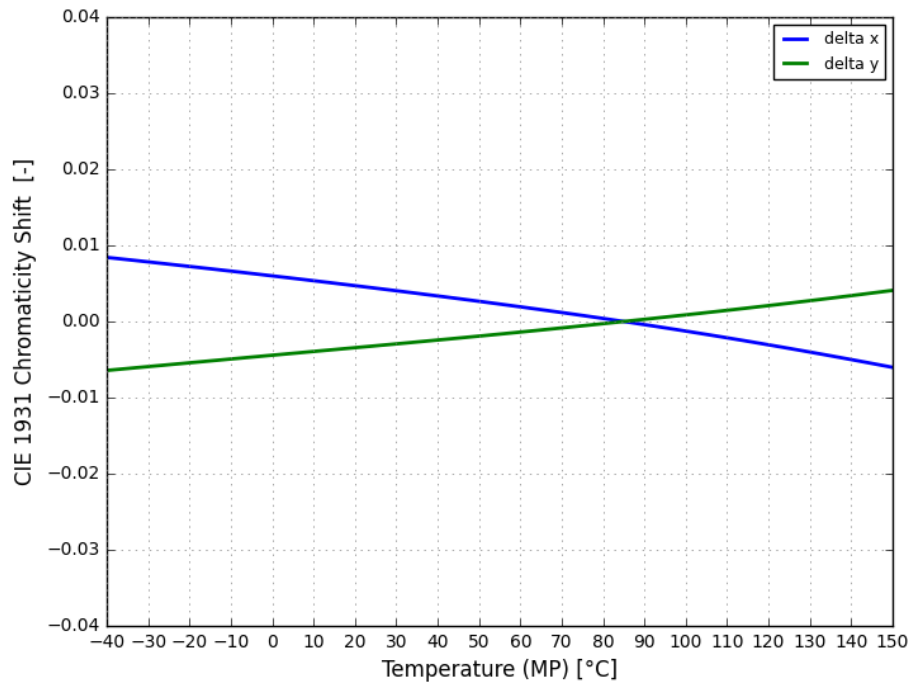


Figure 7. Typical color shift in CIE1931 x, y coordinates vs. temperature for LUXEON FX2-L PC Amber at MP binning current

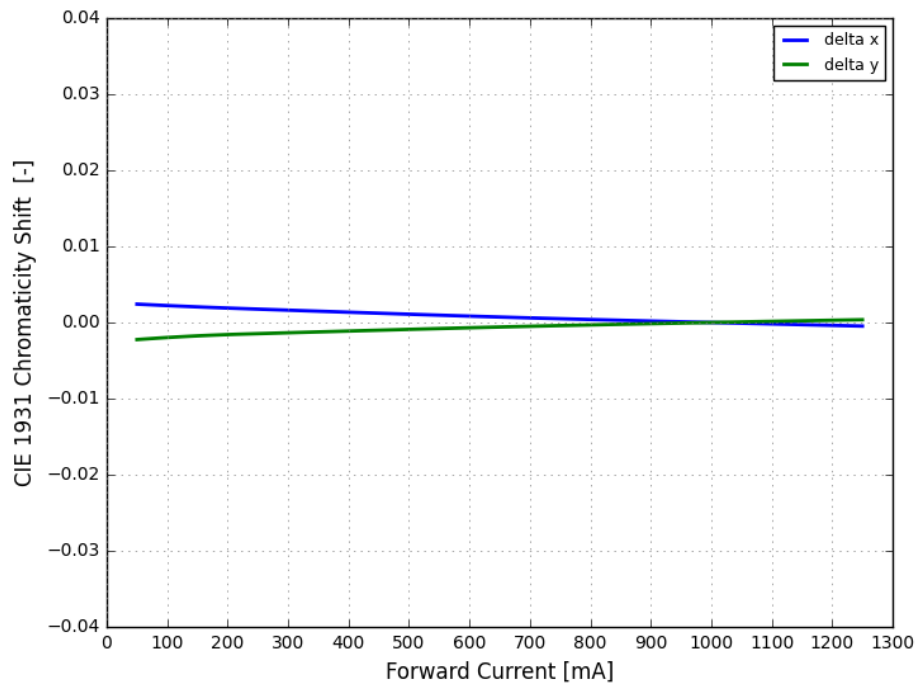


Figure 8. Typical color shift in CIE1931 x, y coordinates vs. forward current for LUXEON FX2-L PC Amber at MP binning temperature

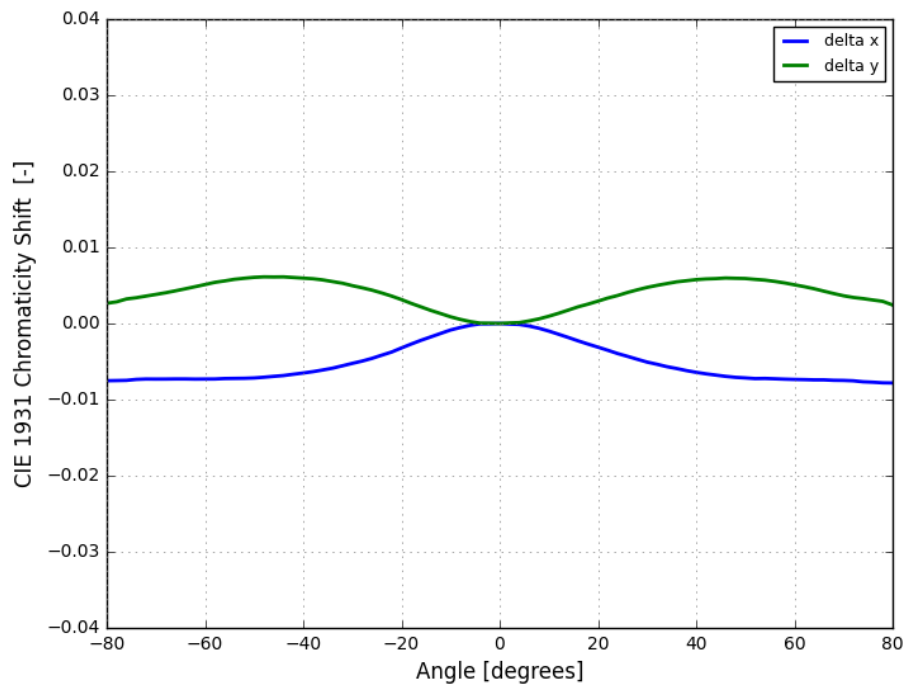


Figure 9. Typical color shift over angle for LUXEON FX2-L PC Amber

Radiation Pattern Characteristics

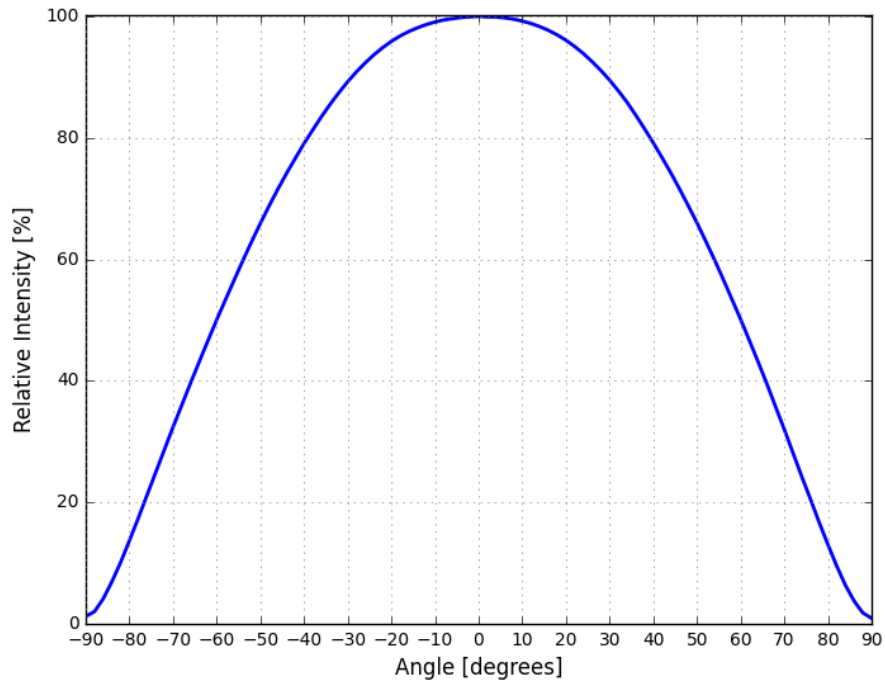


Figure 10. Typical radiation pattern for LUXEON FX2-L PC Amber

Operating Limits Characteristics

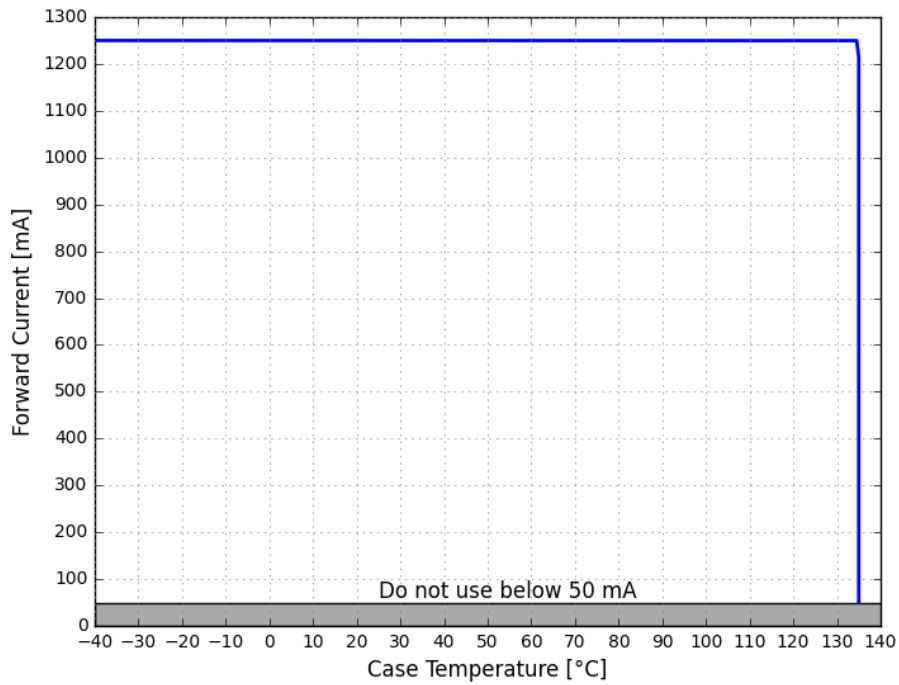


Figure 11. Maximum forward current vs. case temperature for LUXEON FX2-L PC Amber

Permissible Pulse Handling Characteristics

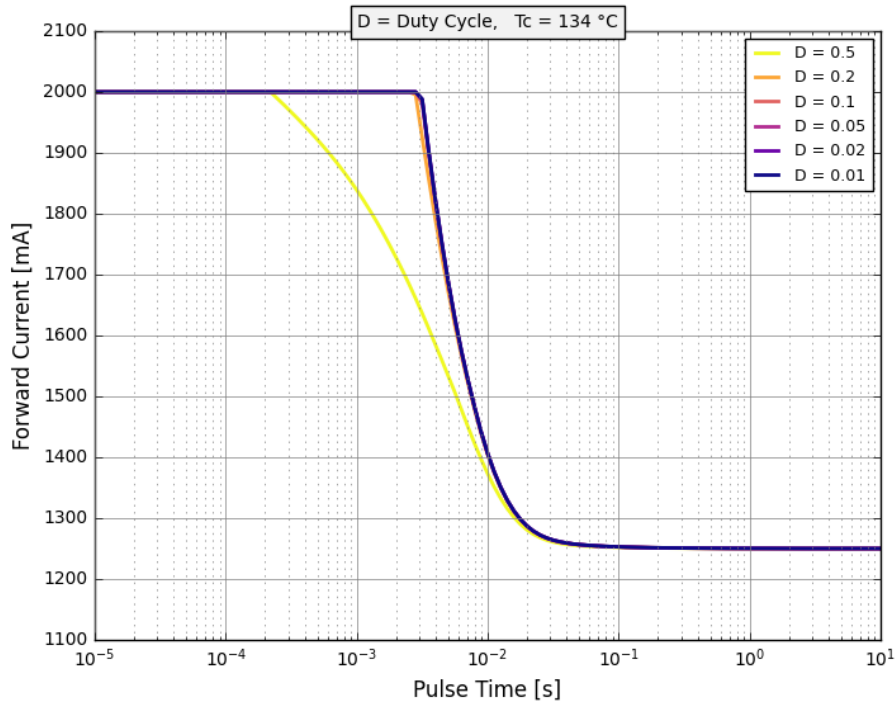


Figure 12. Pulse handling capability for LUXEON FX2-L PC Amber at highest case temperature, where maximum DC current can be applied

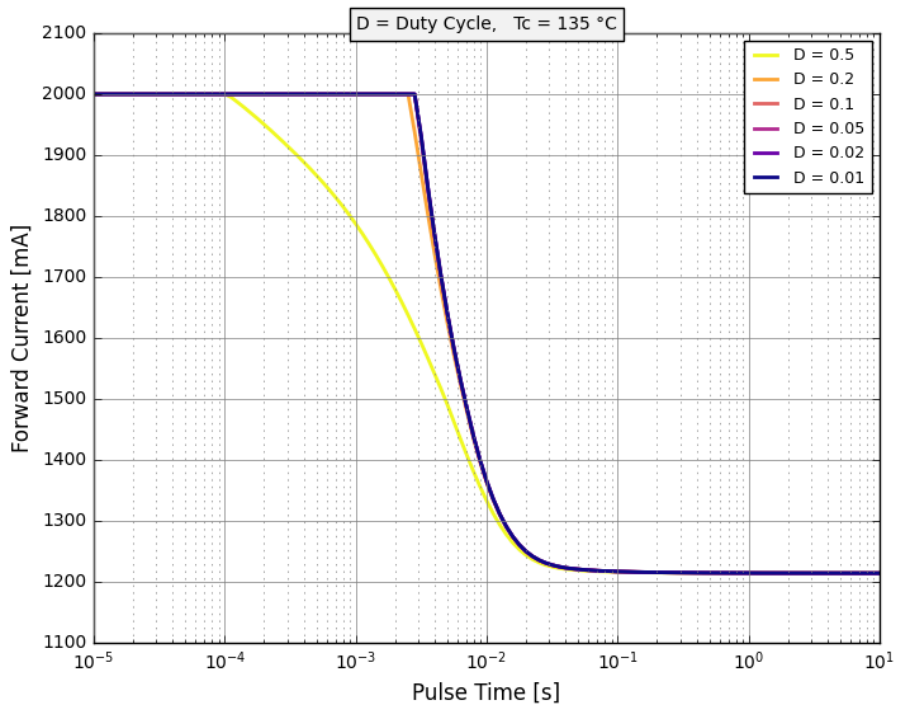


Figure 13. Pulse handling capability for LUXEON FX2-L PC Amber at maximum case temperature

Product Bin and Labeling Definitions

Decoding Product Bin Labeling

In the manufacturing of semiconductor products, there are variations in performance around the average values given in the technical datasheet. For this reason, Lumileds bins components for luminous flux or radiometric power, color point, peak or dominant wavelength and forward voltage.

LUXEON FX2-L PC Amber emitters are labeled using a 3-digit alphanumeric CAT code following the format below:

A B C

Where:

- A** – designates luminous flux bin (example: Q = 300 to 310 lumens)
- B** – designates color bin (example: E = color bin E)
- C** – designates forward voltage bin (example: B = 2.90 V to 3.20 V)

Therefore, a LUXEON FX2-L PC Amber with a lumen range of 300 to 310 lumens, color code HC and a forward voltage of 2.90 V to 3.20 V has the following CAT code:

Q E B

Luminous Flux Bins

Table 6 lists the standard luminous flux bins for LUXEON FX2-L PC Amber emitters. Although several bins are outlined, product availability in a particular bin varies by production run and by product performance.

Table 6. Luminous flux bin definitions for LUXEON FX2-L PC Amber at MP binning condition

BIN	LUMINOUS FLUX ⁽¹⁾ (lm)	
	MINIMUM	MAXIMUM
N	280	290
P	290	300
Q	300	310
R	310	320
S	320	330
T	330	340

Notes for Table 6:

1. Lumileds maintains a tolerance of $\pm 6.5\%$ on luminous flux measurements.

Color Codes

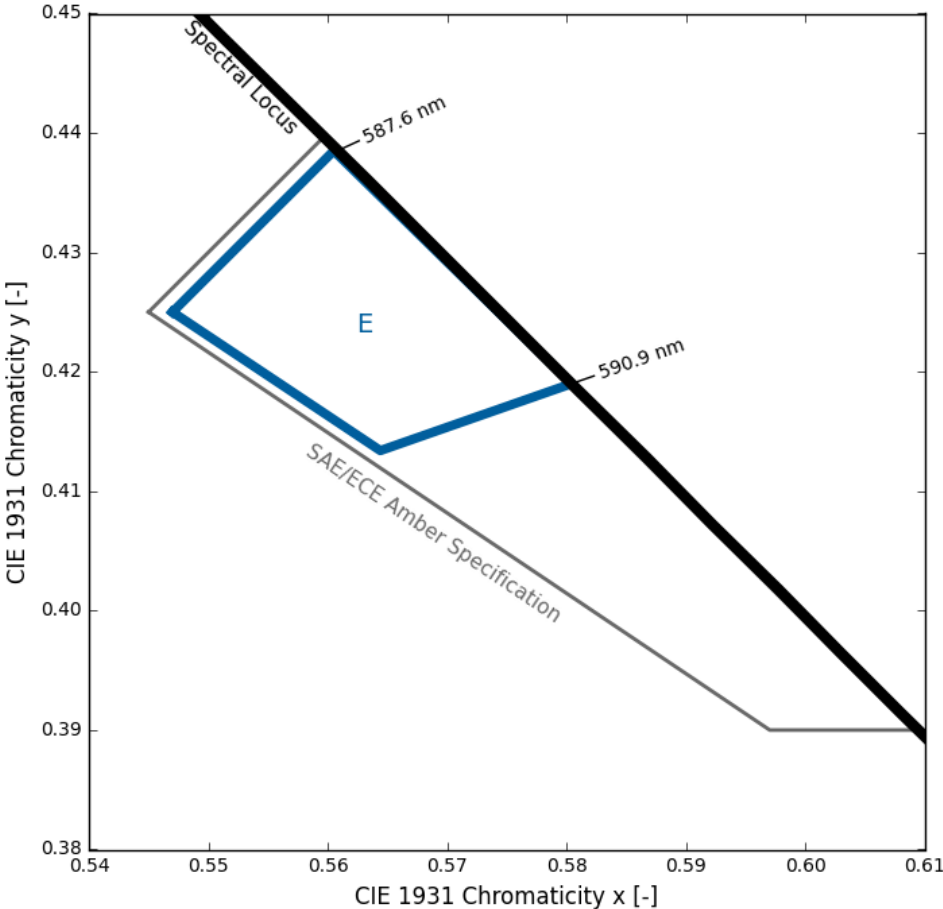


Figure 14. Color bin structure for LUXEON FX2-L PC Amber

Color Bin Definitions

Table 7. Color bin definitions for LUXEON FX2-L PC Amber^[1]

COLOR BIN	x	y
E	0.5470	0.4250
	0.5605	0.4385
	0.5804	0.4190
	0.5644	0.4134

Notes for Table 7:

1. Lumileds maintains a tester tolerance of ± 0.005 on CIE1931 x, y color coordinates.

Forward Voltage Bins

Forward voltage distribution of Lumileds LEDs is very narrow, nevertheless for some applications the restriction of forward voltage is beneficial. On request individual bins are available according to Table 8.

Table 8. Forward voltage bin definitions for LUXEON FX2-L PC Amber at MP binning condition

BIN	FORWARD VOLTAGE ⁽¹⁾ (V)	
	MINIMUM	MAXIMUM
B	2.90	3.20
C	3.20	3.35

Notes for Table 8:

1. Lumileds maintains a tolerance of ± 0.06 V on forward voltage measurements.

Mechanical Dimensions

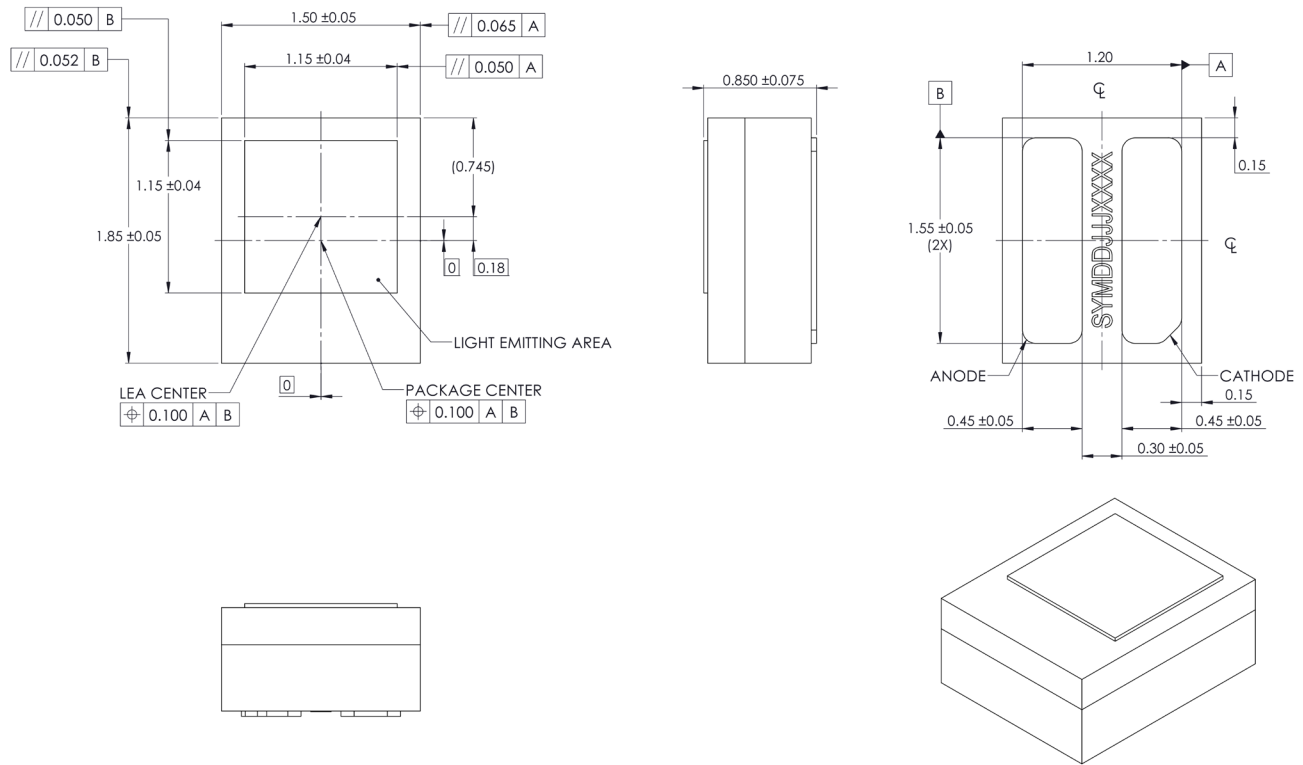


Figure 15. Mechanical dimensions for LUXEON FX2-L PC Amber

- Notes for Figure 16:
1. Drawings are not to scale.
 2. All dimensions are in millimeters.

Package Weight

Table 9. Approximate weight of LUXEON FX2-L PC Amber

PART NUMBER	PACKAGE WEIGHT [mg]
A1F2-0591F3Dxxxxxx	13.1

JEDEC Moisture Sensitivity

Table 10. Moisture sensitivity levels for LUXEON FX2-L PC Amber

LEVEL	FLOOR LIFE		STANDARD SOAK REQUIREMENTS	
	TIME	CONDITIONS	TIME	CONDITIONS
1	Unlimited	≤30 °C / 85% RH	168 Hours +5 / -0	85 °C / 85% RH

Packaging Information

Pocket Tape Dimensions

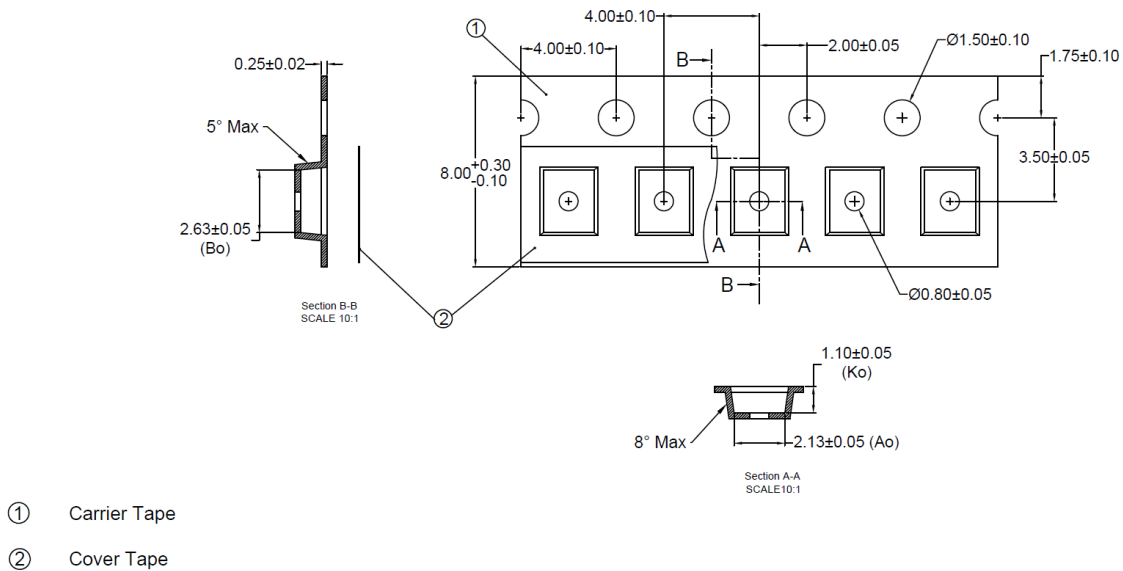


Figure 16. Pocket tape dimensions for LUXEON FX2-L PC Amber

Notes for Figure 17:

1. Drawings are not to scale.
2. All dimensions are in millimeters.
3. Ao is the width of pocket and Ko is the depth of pocket. Bo is the height of pocket.

Reel Dimensions

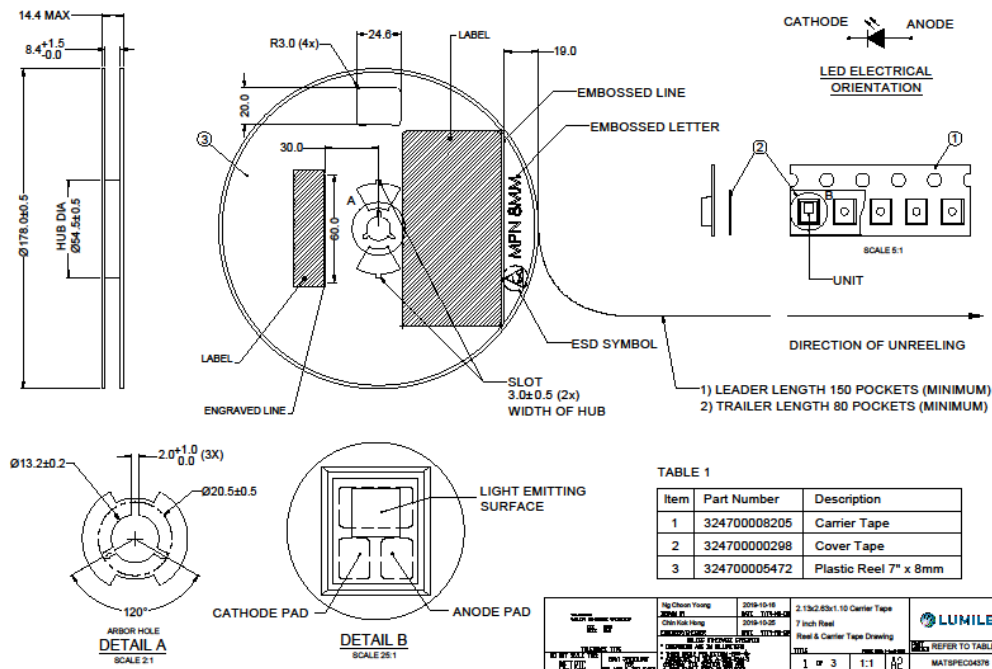


Figure 17. Reel dimensions for LUXEON FX2-L PC Amber

Notes for Figure 18:

1. Drawings are not to scale.
2. All dimensions are in millimeters.

Product Labelling

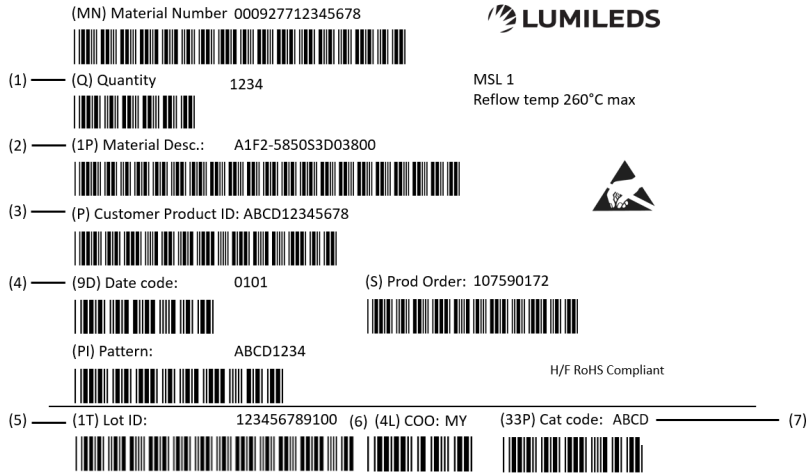


Figure 18. Example of a product label for illustration purposes

Notes for Figure 19 - Reel label descriptions for customer use:

Field labels not described are for Lumileds internal use only.

1. Total number of LED emitters in a shipment box
2. Lumileds part number
3. Customer part number for custom requests only
4. LED test date in YYWW format
5. Unique product lot identification number. This number is required for traceability purposes.
6. Country code of origin of manufacturing of part (e.g. MY for Malaysia, CN for China) according to ISO 3166-1 alpha-2 document.
7. Product bin 4-digit alphanumeric CAT code

About Lumileds

Companies developing automotive, mobile, IoT and illumination lighting applications need a partner who can collaborate with them to push the boundaries of light. With over 100 years of inventions and industry firsts, Lumileds is a global lighting solutions company that helps customers around the world deliver differentiated solutions to gain and maintain a competitive edge. As the inventor of Xenon technology, a pioneer in halogen lighting and the leader in high performance LEDs, Lumileds builds innovation, quality and reliability into its technology, products and every customer engagement. Together with its customers, Lumileds is making the world better, safer, more beautiful—with light.

To learn more about our lighting solutions, visit lumileds.com.



©2025 Lumileds Holding B.V. All rights reserved
LUXEON is a registered trademark of the Lumileds Holding B.V. in the United States and other countries.

lumileds.com

DS464 LUXEON FX2-L PC Amber (Gen9)
Product Datasheet

Neither Lumileds Holding B.V. nor its affiliates shall be liable for any kind of loss of data or any other damages, direct, indirect or consequential, resulting from the use of the provided information and data. Although Lumileds Holding B.V. and/or its affiliates have attempted to provide the most accurate information and data, the materials and services information and data are provided "as is," and neither Lumileds Holding B.V. nor its affiliates warrants or guarantees the contents and correctness of the provided information and data. Lumileds Holding B.V. and its affiliates reserve the right to make changes without notice. You as user agree to this disclaimer and user agreement with the download or use of the provided materials, information and data. A listing of Lumileds product/patent coverage may be accessed at lumileds.com/patents.