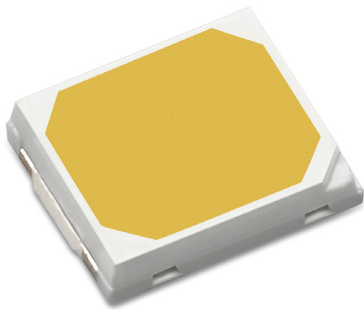




# LUXEON 2835 Commercial

Superior lm/W/\$ choice in LUXEON 2835 portfolio



LUXEON 2835 Commercial mid-power LEDs are the price/performance leader for commercial indoor lighting solutions when lumens per Watt and lumens per dollar are the driving metrics for development. They are available in CCTs from 2700K to 6500K and CRIs of 80 and 90. LUXEON 2835 Commercial has a superior max current rating and features a 1/5<sup>th</sup> color bin structure making it a perfect choice for indoor applications where you want the quality and reliability of LUXEON in a commercial application. LUXEON 2835 Commercial leads its class in flux, color consistency, robustness, and reliability making it the right choice for commercial indoor luminaires.

## FEATURES AND BENEFITS

- Complete CCT/CRI offering for various application
- Industry standard footprint for drop-in replacement
- Reliable package design for commercial applications
- 5 SDCM MacAdam ellipse enable precise color control

## PRIMARY APPLICATIONS

- Panel / Soft Lights
- Linear
- Troffers

LUXEON 2835 Commercial product performance at specified test conditions.

VOLTAGE	PART	NOMINAL CCT <sup>[1]</sup>	MINIMUM CRI <sup>[2, 3]</sup>	LUMINOUS FLUX <sup>[2, 3]</sup> (lm)		TYPICAL LUMINOUS EFFICACY (lm/W)	TEST CURRENT (mA)	PART NUMBER
				MINIMUM	TYPICAL			
3V	LUXEON 2835 S	2700K	80	30.0	33.2	185.1	65	L128-2780SA35A00A1
		3000K	80	32.0	34.4	192.0	65	L128-3080SA35A00A1
		3500K	80	32.5	35.1	196.0	65	L128-3580SA35A00A1
		4000K	80	33.0	35.8	200.0	65	L128-4080SA35A00A1
		5000K	80	33.0	35.8	200.0	65	L128-5080SA35A00A1
		5700K	80	33.0	35.8	200.0	65	L128-5780SA35A00A1
		6500K	80	32.5	35.4	197.3	65	L128-6580SA35A00A1
		2700K	90	25.5	27.5	153.3	65	L128-2790SA35A00A1
		3000K	90	26.8	28.8	160.5	65	L128-3090SA35A00A1
		3500K	90	28.1	30.2	168.3	65	L128-3590SA35A00A1
		4000K	90	28.6	30.8	171.7	65	L128-4090SA35A00A1
		5000K	90	28.6	30.8	171.7	65	L128-5090SA35A00A1
		5700K	90	28.6	30.8	171.7	65	L128-5790SA35A00A1
		6500K	90	28.3	30.4	169.5	65	L128-6590SA35A00A1
		2700K	80	31.3	34.3	194.7	65	L128-2780SA35A00B1
		3000K	80	32.2	35.4	201.0	65	L128-3080SA35A00B1
		3500K	80	33.2	36.3	206.1	65	L128-3580SA35A00B1
		4000K	80	33.8	36.9	209.5	65	L128-4080SA35A00B1
		5000K	80	33.8	37.1	210.6	65	L128-5080SA35A00B1
		5700K	80	33.8	37.1	210.6	65	L128-5780SA35A00B1
		6500K	80	33.3	36.6	207.8	65	L128-6580SA35A00B1
		2700K	90	26.8	28.8	163.5	65	L128-2790SA35A00B1
		3000K	90	27.4	29.9	169.7	65	L128-3090SA35A00B1
		3500K	90	28.3	30.8	174.9	65	L128-3590SA35A00B1
		4000K	90	29.4	31.8	180.5	65	L128-4090SA35A00B1
		5000K	90	29.4	31.8	180.5	65	L128-5090SA35A00B1
		5700K	90	29.4	31.8	180.5	65	L128-5790SA35A00B1
		6500K	90	29.4	31.8	180.5	65	L128-6590SA35A00B1
		2700K	80	29.2	31.4	173.8	65	L128-2780SA35A00C1
		3000K	80	30.2	32.5	179.9	65	L128-3080SA35A00C1
		3500K	80	31.1	33.5	185.4	65	L128-3580SA35A00C1
		4000K	80	31.6	33.9	187.6	65	L128-4080SA35A00C1
		5000K	80	31.6	34.0	188.2	65	L128-5080SA35A00C1
		5700K	80	31.6	34.0	188.2	65	L128-5780SA35A00C1
		6500K	80	31.4	33.7	186.5	65	L128-6580SA35A00C1
		2700K	90	24.9	26.8	148.3	65	L128-2790SA35A00C1
3000K	90	25.8	27.8	153.8	65	L128-3090SA35A00C1		
3500K	90	26.7	28.8	159.4	65	L128-3590SA35A00C1		
4000K	90	28.2	30.3	167.7	65	L128-4090SA35A00C1		
5000K	90	28.2	30.4	168.2	65	L128-5090SA35A00C1		
5700K	90	28.2	30.4	168.2	65	L128-5790SA35A00C1		
6500K	90	27.9	30.0	166.0	65	L128-6590SA35A00C1		

Table continued on next page:

1. Correlated color temperature is cold-targeted at T<sub>j</sub>=25°C.
2. Luminous flux and CRI specs are based upon mounted package on highly reflective surface at T<sub>j</sub>=25°C. Typical CRI is approximately 2 points higher than the minimum CRI specified, but this is not guaranteed.
3. Lumileds maintains a tolerance of ±2 on CRI and ±7.5% on luminous flux measurements.

LUXEON 2835 Commercial product performance at specified test conditions, Continued.

VOLTAGE	PART	NOMINAL CCT <sup>[1]</sup>	MINIMUM CRI <sup>[2, 3]</sup>	LUMINOUS FLUX <sup>[2, 3]</sup> (lm)		TYPICAL LUMINOUS EFFICACY (lm/W)	TEST CURRENT (mA)	PART NUMBER
				MINIMUM	TYPICAL			
3V LUXEON 2835 S		2700K	80	31.6	34	190.9	65	L128-2780SA35A00D1
		3000K	80	32.4	34.8	195.4	65	L128-3080SA35A00D1
		3500K	80	33.1	35.5	199.3	65	L128-3580SA35A00D1
		4000K	80	33.8	36.3	203.8	65	L128-4080SA35A00D1
		5000K	80	34.2	36.7	206.1	65	L128-5080SA35A00D1
		5700K	80	34.2	36.7	206.1	65	L128-5780SA35A00D1
		6500K	80	33.8	36.3	203.8	65	L128-6580SA35A00D1
		2700K	90	27.2	29.3	164.5	65	L128-2790SA35A00D1
		3000K	90	28.4	30.6	171.8	65	L128-3090SA35A00D1
		3500K	90	29.4	31.6	177.4	65	L128-3590SA35A00D1
		4000K	90	29.7	32	179.7	65	L128-4090SA35A00D1
		5000K	90	29.7	32	179.7	65	L128-5090SA35A00D1
		5700K	90	29.6	31.8	178.6	65	L128-5790SA35A00D1
		6500K	90	29.4	31.6	177.4	65	L128-6590SA35A00D1
		2500K	95	23.3	24.1	135.3	65	L128-2595SA35A00D1
		2700K	95	24.1	24.8	139.2	65	L128-2795SA35A00D1
		3000K	95	25.1	25.8	144.9	65	L128-3095SA35A00D1
		3500K	95	26.0	26.7	149.9	65	L128-3595SA35A00D1
		4500K	95	27.5	28.3	158.9	65	L128-4595SA35A00D1
		5000K	95	27.5	28.3	158.9	65	L128-5095SA35A00D1
		2700K	90	33.1	34.2	192.0	65	L128-2790SA35A0KD1
		3000K	90	33.9	35.0	196.4	65	L128-3090SA35A0KD1
		3500K	90	34.3	35.4	199.0	65	L128-3590SA35A0KD1
		4000K	90	34.6	35.8	201.0	65	L128-4090SA35A0KD1
		5000K	90	34.4	35.6	200.0	65	L128-5090SA35A0KD1
		5700K	90	34.3	35.4	199.0	65	L128-5790SA35A0KD1
		6500K	90	34.3	35.4	199.0	65	L128-6590SA35A0KD1
		2700K	90	30.7	31.7	178.2	65	L128-2790SA35A1KD1
		3000K	90	31.8	32.9	184.9	65	L128-3090SA35A1KD1
		3500K	90	32.2	33.3	187.1	65	L128-3590SA35A1KD1
		4000K	90	32.9	34.1	191.6	65	L128-4090SA35A1KD1
		5000K	90	32.9	34.1	191.6	65	L128-5090SA35A1KD1
		5700K	90	32.9	34.1	191.6	65	L128-5790SA35A1KD1
		6500K	90	32.9	34.1	191.6	65	L128-6590SA35A1KD1
		2700K	70	34.7	36.4	207.4	65	L128-2770SA35A00E1
		3000K	70	35.7	37.4	213.1	65	L128-3070SA35A00E1
		3500K	70	36.1	37.8	215.4	65	L128-3570SA35A00E1
		4000K	70	37.2	39.0	222.2	65	L128-4070SA35A00E1
		5000K	70	36.8	38.5	219.4	65	L128-5070SA35A00E1
		5700K	70	36.8	38.5	219.4	65	L128-5770SA35A00E1
		6500K	70	36.5	38.2	217.7	65	L128-6570SA35A00E1
		2700K	80	33.8	34.2	195.0	65	L128-2780SA35A00E1
		3000K	80	34.3	35.2	200.6	65	L128-3080SA35A00E1
		3500K	80	35.3	35.9	204.6	65	L128-3580SA35A00E1
		4000K	80	37.2	38.2	218.0	65	L128-4080SA35A00E1
		5000K	80	37.2	38.2	218.0	65	L128-5080SA35A00E1
		5700K	80	36.7	38.2	218.0	65	L128-5780SA35A00E1
		6500K	80	35.7	37.5	214.0	65	L128-6580SA35A00E1

Table continued on next page:

1. Correlated color temperature is cold-targeted at T<sub>c</sub>=25°C.
2. Luminous flux and CRI specs are based upon mounted package on highly reflective surface at T<sub>c</sub>=25°C. Typical CRI is approximately 2 points higher than the minimum CRI specified, but this is not guaranteed.
3. Lumileds maintains a tolerance of ±2 on CRI and ±7.5% on luminous flux measurements.

LUXEON 2835 Commercial product performance at specified test conditions, Continued.

VOLTAGE	PART	NOMINAL CCT <sup>[1]</sup>	MINIMUM CRI <sup>[2, 3]</sup>	LUMINOUS FLUX <sup>[2, 3]</sup> (lm)		TYPICAL LUMINOUS EFFICACY (lm/W)	TEST CURRENT (mA)	PART NUMBER
				MINIMUM	TYPICAL			
3V LUXEON 2835 S		2700K	90	29.8	31.0	176.6	65	L128-2790SA35A00E1
		3000K	90	30.6	32.2	183.5	65	L128-3090SA35A00E1
		3500K	90	30.8	32.4	184.6	65	L128-3590SA35A00E1
		4000K	90	31.3	32.7	186.3	65	L128-4090SA35A00E1
		5000K	90	31.3	32.7	186.3	65	L128-5090SA35A00E1
		5700K	90	31.3	32.7	186.3	65	L128-5790SA35A00E1
		6500K	90	31.8	32.7	186.3	65	L128-6590SA35A00E1
		2700K	70	35.8	37.4	213.1	65	L128-2770SA35A00F1
		3000K	70	36.9	38.6	219.9	65	L128-3070SA35A00F1
		3500K	70	37.3	39.1	222.8	65	L128-3570SA35A00F1
		4000K	70	38.8	40.6	231.3	65	L128-4070SA35A00F1
		5000K	70	38.3	40.1	228.5	65	L128-5070SA35A00F1
		5700K	70	38.3	40.1	228.5	65	L128-5770SA35A00F1
		6500K	70	37.8	39.6	225.6	65	L128-6570SA35A00F1
		2700K	80	34.8	35.2	200.6	65	L128-2780SA35A00F1
		3000K	80	35.7	36.1	205.7	65	L128-3080SA35A00F1
		3500K	80	36.7	37.3	212.5	65	L128-3580SA35A00F1
		4000K	80	37.5	38.6	220.0	65	L128-4080SA35A00F1
		5000K	80	37.7	38.6	220.0	65	L128-5080SA35A00F1
		5700K	80	37.7	38.6	220.0	65	L128-5780SA35A00F1
		6500K	80	37.7	39.5	225.1	65	L128-6580SA35A00F1
		2700K	90	29.8	31.2	177.7	65	L128-2790SA35A00F1
		3000K	90	30.8	32.4	184.5	65	L128-3090SA35A00F1
		3500K	90	31.8	32.6	185.6	65	L128-3590SA35A00F1
		4000K	90	32.3	33.0	187.8	65	L128-4090SA35A00F1
		5000K	90	32.3	33.0	187.8	65	L128-5090SA35A00F1
		5700K	90	32.3	33.0	187.8	65	L128-5790SA35A00F1
		6500K	90	32.3	33.0	187.8	65	L128-6590SA35A00F1
		2700K	90	31.6	32.7	186.3	65	L128-2790SA35A1KF1
		3000K	90	32.8	33.9	193.1	65	L128-3090SA35A1KF1
		3500K	90	33.2	34.4	195.9	65	L128-3590SA35A1KF1
		4000K	90	34.1	35.3	201.0	65	L128-4090SA35A1KF1
		5000K	90	34.1	35.3	201.0	65	L128-5090SA35A1KF1
		5700K	90	34.1	35.3	201.0	65	L128-5790SA35A1KF1
		6500K	90	34.1	35.3	201.0	65	L128-6590SA35A1KF1
		2700K	80	30.2	31.7	175.4	65	L128-2780SA35A00G1
		3000K	80	30.7	32.3	178.7	65	L128-3080SA35A00G1
		3500K	80	30.9	32.5	179.9	65	L128-3580SA35A00G1
		4000K	80	32.5	34.2	189.3	65	L128-4080SA35A00G1
		5000K	80	32.5	34.2	189.3	65	L128-5080SA35A00G1
		5700K	80	32.5	34.2	189.3	65	L128-5780SA35A00G1
		6500K	80	31.8	33.5	185.4	65	L128-6580SA35A00G1
	2700K	90	25.0	26.1	144.4	65	L128-2790SA35A00G1	
	3000K	90	26.0	27.1	150.0	65	L128-3090SA35A00G1	
	3500K	90	27.0	28.1	155.5	65	L128-3590SA35A00G1	
	4000K	90	28.3	29.5	163.3	65	L128-4090SA35A00G1	
	5000K	90	28.0	29.2	161.6	65	L128-5090SA35A00G1	
	5700K	90	28.0	29.2	161.6	65	L128-5790SA35A00G1	
	6500K	90	27.6	28.8	159.4	65	L128-6590SA35A00G1	

Table continued on next page:

1. Correlated color temperature is cold-targeted at T<sub>j</sub>=25°C.
2. Luminous flux and CRI specs are based upon mounted package on highly reflective surface at T<sub>j</sub>=25°C. Typical CRI is approximately 2 points higher than the minimum CRI specified, but this is not guaranteed.
3. Lumileds maintains a tolerance of ±2 on CRI and ±7.5% on luminous flux measurements.

LUXEON 2835 Commercial product performance at specified test conditions, Continued.

VOLTAGE	PART	NOMINAL CCT <sup>[1]</sup>	MINIMUM CRI <sup>[2, 3]</sup>	LUMINOUS FLUX <sup>[2, 3]</sup> (lm)		TYPICAL LUMINOUS EFFICACY (lm/W)	TEST CURRENT (mA)	PART NUMBER
				MINIMUM	TYPICAL			
3V	LUXEON 2835 S	2700K	80	28.2	29.2	155.0	65	L128-2780SA35A00H1
		3000K	80	29.0	30.0	159.2	65	L128-3080SA35A00H1
		3500K	80	30.2	31.2	166.0	65	L128-3580SA35A00H1
		4000K	80	30.6	31.6	168.0	65	L128-4080SA35A00H1
		5000K	80	30.6	31.6	168.0	65	L128-5080SA35A00H1
		5700K	80	30.2	31.2	166.0	65	L128-5780SA35A00H1
		6500K	80	30.0	31.0	165.0	65	L128-6580SA35A00H1
6V	LUXEON 2835 S	2700K	80	102.3	110.1	151.7	120	L128-2780SB35B00A1
		3000K	80	105.1	113.2	155.9	120	L128-3080SB35B00A1
		3500K	80	107.9	116.1	159.9	120	L128-3580SB35B00A1
		4000K	80	110.9	119.4	164.5	120	L128-4080SB35B00A1
		5000K	80	110.9	119.4	164.5	120	L128-5080SB35B00A1
		5700K	80	110.9	119.4	164.5	120	L128-5780SB35B00A1
		6500K	80	109.8	118.3	162.9	120	L128-6580SB35B00A1
		2700K	90	85.6	92.3	127.1	120	L128-2790SB35B00A1
		3000K	90	89.4	96.4	132.8	120	L128-3090SB35B00A1
		3500K	90	93.3	100.6	138.6	120	L128-3590SB35B00A1
		4000K	90	96.8	104.3	143.7	120	L128-4090SB35B00A1
		5000K	90	96.8	104.3	143.7	120	L128-5090SB35B00A1
		5700K	90	96.8	104.3	143.7	120	L128-5790SB35B00A1
		6500K	90	96.4	103.9	143.1	120	L128-6590SB35B00A1

Notes for Table:

1. Correlated color temperature is cold-targeted at T<sub>j</sub>=25°C.
2. Luminous flux and CRI specs are based upon mounted package on highly reflective surface at T<sub>j</sub>=25°C. Typical CRI is approximately 2 points higher than the minimum CRI specified, but this is not guaranteed.
3. Lumileds maintains a tolerance of ±2 on CRI and ±7.5% on luminous flux measurements.